

# Neighbourhood Plans – making it happen

Hammersmith Society workshop 2nd December 2015

## St Quintin and Woodlands Neighbourhood Plan

The first part of the session will look at the experience of a residents association in North Kensington, in putting together a neighbourhood plan which has now completed its 'examination' and is awaiting a local referendum. The neighbourhood area is shown on the map above.

The StQW Draft Plan allocates sites for housing and designates three Local Green Spaces. The policies proposed in the Plan have been strongly supported by local residents. But some of them have been equally strongly opposed by a landowner and a developer, and by the local authority itself.

The Plan has therefore been a test case in whether neighbourhood planning matches up to Government objectives in providing a '*powerful set of tools for local people to ensure that they get the right types of development for their community*'. The content of the session may surprise those who thought that neighbourhood planning was one of those Big Society ideas that never really happened. It is happening, and it works.

## Ideas for a neighbourhood plan for Old Oak

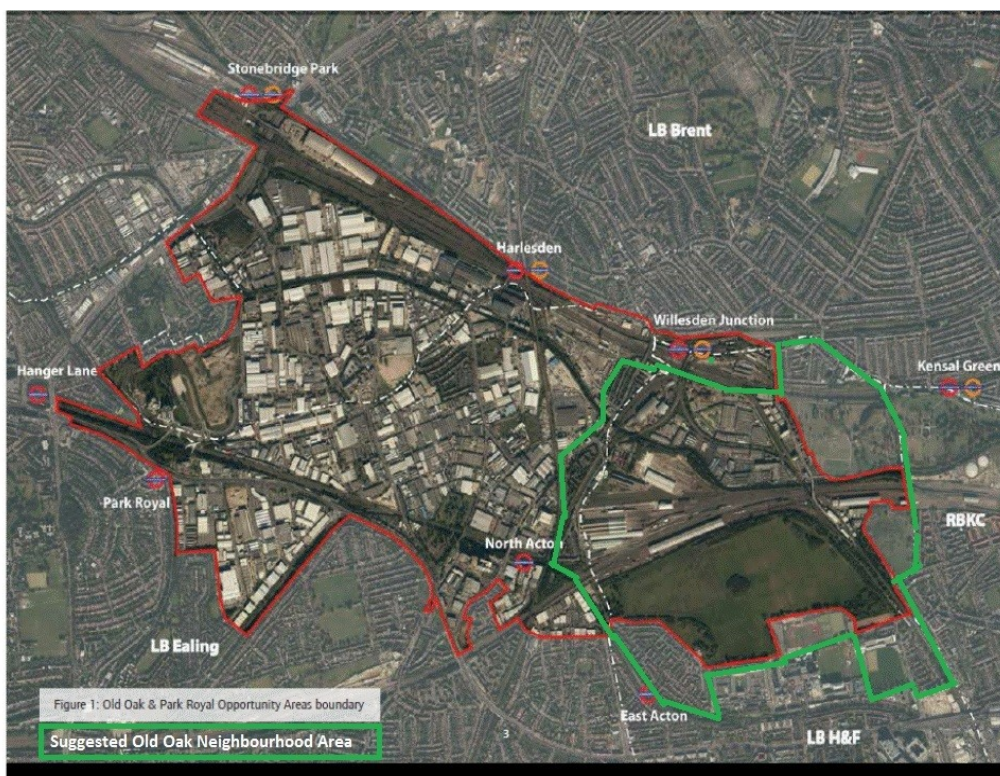
This part of session will give an update on current discussions on proposals for a neighbourhood plan for Old Oak.

The OPDC is now the planning authority for the northern part of Hammersmith, as well as parts of Ealing and of Brent. The OPDC Board is responsible for dealing with any neighbourhood plan proposals across the OPDC area.

Old Oak is one of London's few areas with a very small residential population, some heavy industry, and a big open space in the form of Wormwood Scrubs. Car Giant and the public sector are the major landowners.

Neighbourhood plans were not around when Kings Cross and London Docklands were being master-planned. What part could a neighbourhood plan now play, in integrating existing small communities within and around the OPDC boundary into a successful and sustainable new part of London?

Resident groups in Ealing and in Hammersmith are interested in the potential. Could it work?



Resident groups currently discussing the idea include those in College Park and the Old Oak Estate. The Friends of Wormwood Scrubs are looking at the idea, as are the three isolated communities in Ealing where the impact of HS2 proposals will be greatest (Wells House Road, the Island Triangle, and Midland Terrace).

Gaining support to the idea from the OPDC, and from Car Giant as the major landowner, will be critical. LBHF will also be involved in deciding any designation application, given that parts of the area remain under its planning powers.